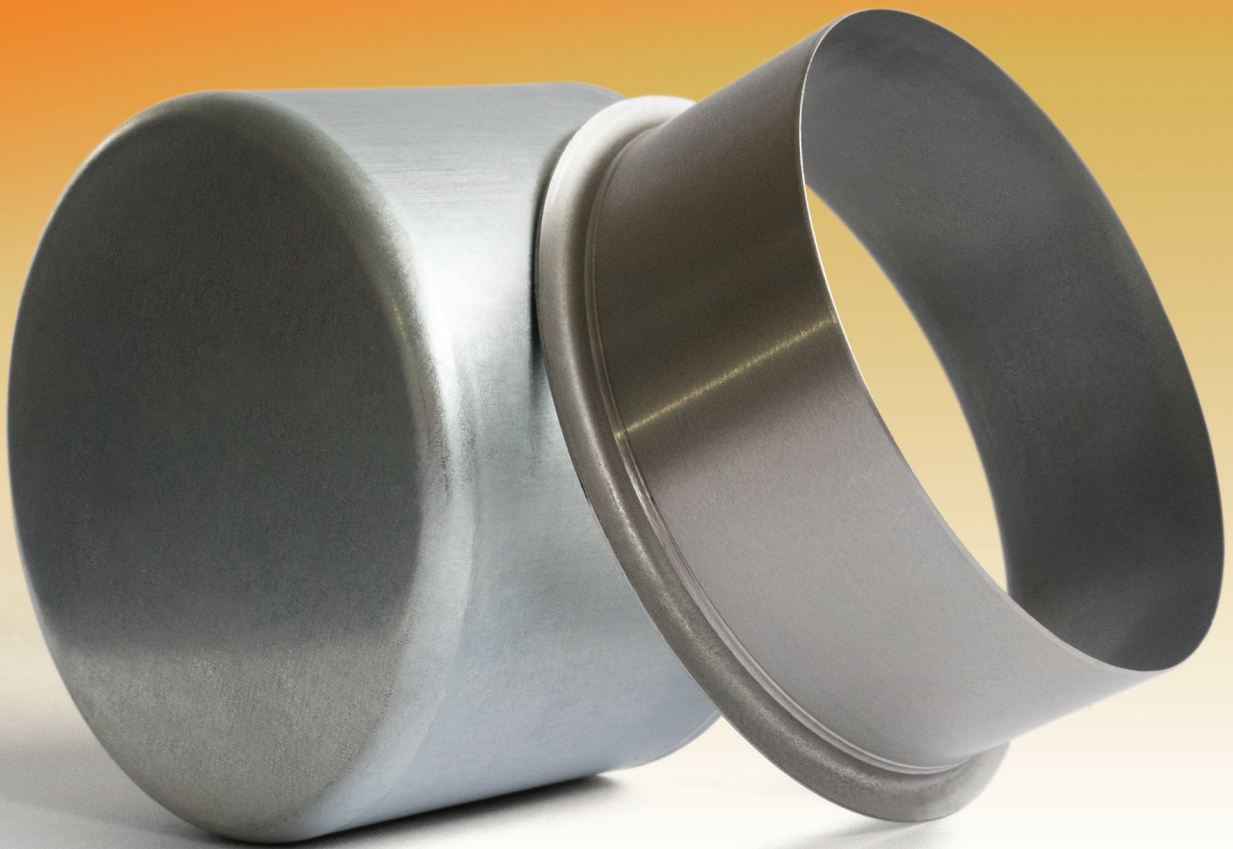


Durusleeves

A FAST, EASY AND ECONOMICAL
FIX FOR WORN SHAFTS



 **DURUS®**

Durusleeve Wear Sleeves

What is the purpose of a wear sleeve?

Over time, a shaft may get worn by the lip of an oil seal. When this happens, a replacement seal should not be installed until the grooved shaft is repaired or replaced. Most often, repairing the shaft with a sleeve is the most economical option.

Fast—

Disassembling machinery to get to a worn shaft can be very time consuming. Machining the shaft and reassembling adds even more delay. Repair worn shafts without unnecessary downtime.

Install with Confidence—

Every Durusleeve comes with step by step installation instructions to help you feel confident about the installation process.

Purposeful Packaging—

Attractive packaging protects each Durusleeve.

Easy—

Anyone can fix a worn shaft surface with a Durusleeve. No special skills are required.

Economical—

Save money as well as time. Reduced downtime means increased uptime.

Available for shaft sizes up to 8".

PRODUCT OF



DurusSeals.com

Durusleeves are a product of Baart Industrial Group (Baart). Baart has tried to ensure the accuracy of the information contained in this document, Baart accepts no responsibility for inaccuracies in, or changes to, such information. © Baart Industrial Group 2018. All rights reserved.